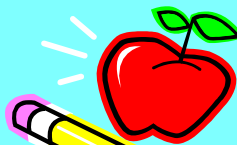




BURSLEDON'S REVIEW OF THE YEAR



2016-2017

Success breeds success

What a year!

This year your children have been scientists, theme park designers, big game hunters, pirates, farmers, allotment growers, Egyptians, potion makers, evacuees, Titanic survivors, smoothie makers, Tudors, radio presenters, musicians, artists, linguists, sports superstars, swimmers, lighthouse keepers, dinosaur hunters, storytellers, magic bean growers and even tourists to Spain!

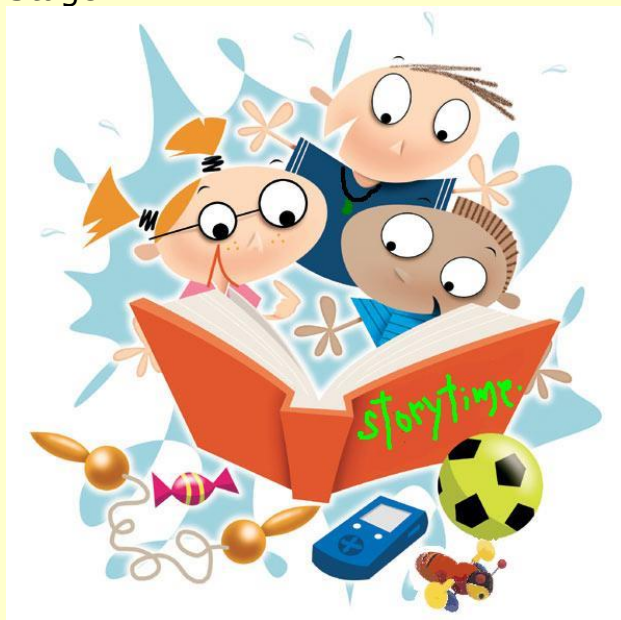


It has been such a joy to see them grow, learn and explore in all aspects of school life!

Test Results 2016-17

Foundation Stage(Yr R)

This year our children achieved 72% Good Level of Development, a 12% increase on last year. Well done all involved in Foundation Stage!



YR1 Phonics

Our Yr 1 children achieved 70% in this year's phonics test. This is a 10% increase from their Good Level of Development Results in 2016. Well done Yr1!

And there's more.....

KS1 Results

Our children have achieved some fabulous outcomes in KS1, through a combination of teacher assessment and test results

	Reading	Writing	Maths	Combined
School Results	81% 32% GD	68% 15% GD	82% 19% GD	66%
Provisional National Results	76%	68%	75%	64%



KS2 Results

Once more Yr6 rose to the challenge of SATS. Although the papers seemed fairer this year, please remember that your children are being tested on a 4 year curriculum, of which they have only experienced 3 years!

Reading

	% ARE	% GD	SS
School	67%	17%	104.8
Provisional National	71%	????	104.1

Writing

	% ARE	% GD	SS
School	72%	7%	NA
Provisional National	76%	15%	NA

Maths

	% ARE	% GD	SS
School	72%	24%	104.7
Provisional National	75%	????	104.2

GPS

	% ARE	% GD	SS
School	67%	24%	105.9
Provisional National	77%	????	105.8

Combined

	% ARE	% GD	SS
School	61%		NA
Provisional National	61%		NA

Things that can't be measured in numbers

- The impact our School Council has had on improving the lunchtime experiences for all
- The mess and mayhem of the Federation's first Arts Week!
- Luna and Darwin learning with the children (admittedly Darwin has a lot more to do!)
- The extra- curricular activities that support the development of future sports stars, dancers, musicians, artists etc
- And not forgetting that the Infant school achieved another GOOD Ofsted outcome in March

And a final thank you...

To all the children, staff, parents and governors who make our Federation the success it is

Here's to our next adventure in 2017-18!